

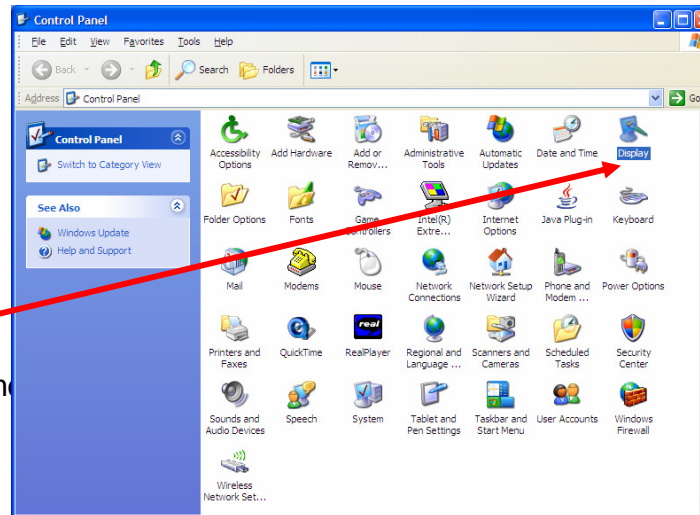
## Setting Up a Second Monitor

1. Before turning on computer or projector, attach the projector to the computer.
2. Turn on the computer. Turn on the projector.

3. Select "Start"

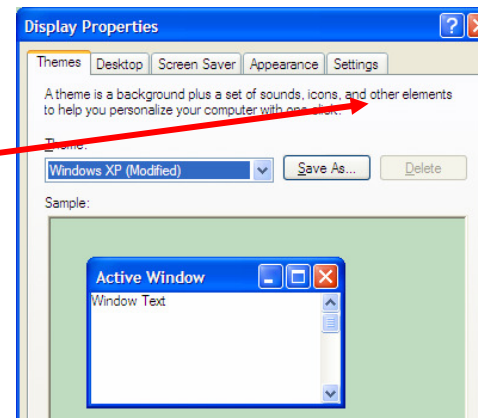


4. Select "Control Panel"



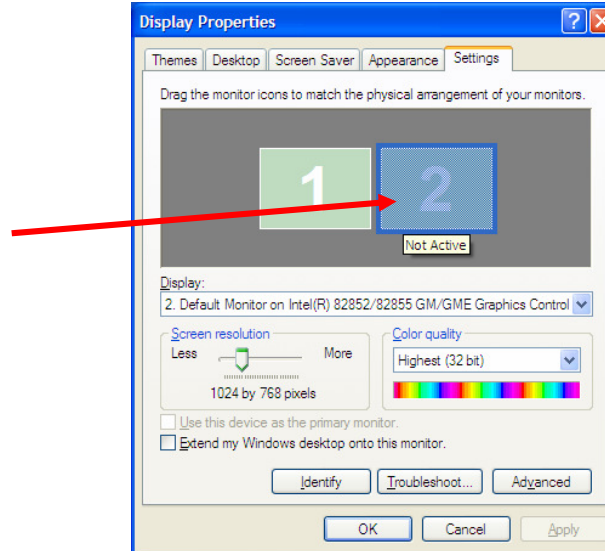
5. Select "Display"  
(The screen can vary depending on windows.)

6. Select "Settings"

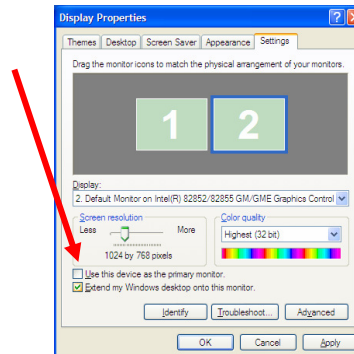


## Setting Up a Second Monitor

7. Select "2".

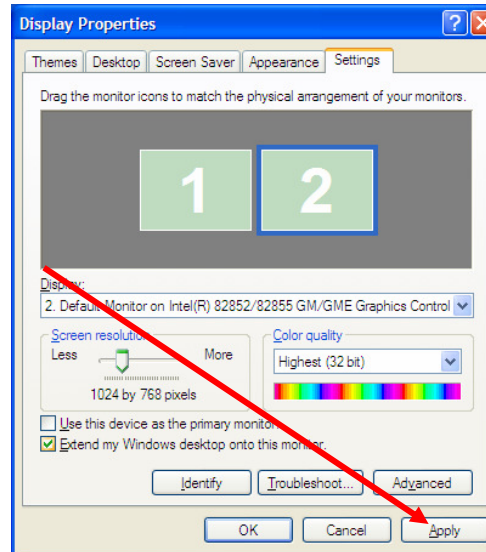


8. Select "Extend Your Desktop". Make sure the resolution is a match to the projector. (i.e 1024 x 768). This must be a resolution that is compatible with the projector--/not/ a resolution that merely matches the laptop's resolution. For example, if the projector only supports 800x600, setting the projector to 1024x768 will probably cause/nothing /to happen on the projector; or if the laptop's screen is set to a higher resolution by default (the widescreen laptops have a standard 1280x768 resolution), then it won't be possible to match the laptop resolution with the projector resolution.

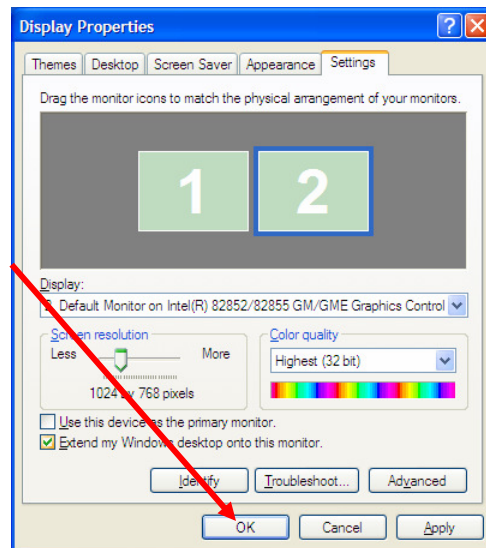


## Setting Up a Second Monitor

9. Select "Apply"



10. Select "OK"



11. If you have successfully set up your project or whiteboard, you will see the background without any of the icons on it.